

3

Course code
ST0211

Total Apprenticeship Duration

21 Months

- On-Programme
18 months
- Assessment Window
3 months

Recommended EPA Organisation
VTCT



Heart of England Training Ltd



Apprenticeship Standard ADVANCED BEAUTY THERAPIST LEVEL 3

Overview

An Advanced Beauty Therapist can be employed within the beauty, travel, leisure and health sectors in a variety of salons, spas and aesthetic environments. Advanced Beauty Therapists will implement and design bespoke treatment plans; for example advanced technical therapies such as face and body electrical treatments to meet and manage client needs and expectations. They will

implement organisational operations, contribute to the financial effectiveness of the business and maintain/maximise resources. In this occupation, the Advanced Beauty Therapist will be responsible for independently delivering treatments in a private, secure and safe environment. When required, they will also supervise others to support team and business growth.

Typical job titles include Advanced Beauty Therapist, Head Therapist and Senior Therapist.

Course content

Knowledge

- Client preparation
- Client care & wellbeing
- Risk assessment protocols
- Usage & adaptation of advanced manual therapy techniques
- Physical & psychological effects of advanced manual therapy techniques
- Adaptation of advanced manual therapies to suit treatment objectives
- Principles of promoting & selling products, tools & equipment

Skills

- Advanced consultations for advanced manual & technical therapies to design bespoke treatment plans
- Implement, perform & adapt advanced manual & facial technical therapy treatments & advanced body technical therapy treatments
- Detailed, written post-treatment advice & recommendations
- Promotion & selling of products suitable for advanced manual & technical services & treatments

Behaviours

- Ownership of work
- Professionalism
- Effective communicator
- Ambassador to the salon & to the industry

Entry requirements

This Standard typically follows the study or completion of a Beauty Therapy Level 2 Apprenticeship Standard or equivalent to have the fundamental foundation of the job role. Individual employers may set their own entry requirements. The apprentice must already be employed for over 16 hours per week. Candidates must have attained at least a Level 1 Functional Skill

or equivalent in English & Maths prior to joining the course. Apprentices without Level 2 English & Maths (or GCSE equivalent) will need to achieve this prior to taking the End-Point Assessment. HOET will support with this. Maths & English tests must be taken under exam conditions.



On-programme development & training

During the programme, candidates will develop their occupation standard's knowledge, skills and behaviours. There is no mandatory qualification, but candidates will be trained and developed in exactly the same way to achieve their End-Point Assessment (EPA). Learners will need to complete treatments which relate to all 15 technologies for both advanced facial technical and body technical treatments, including Galvanic, Microcurrent, Microdermabrasion, low-intensity LED light, Skin-warming devices, High-radio frequency and

Lymphatic drainage equipment.

Candidates will be supported by day release sessions; one-to-one visits can be arranged on confirmation of equipment required to complete the 15 technologies & treatment log. There will be regular theory sessions to ensure the required knowledge is delivered and understood. All of the above will help to contribute to the candidate's off-the-job training requirement. HOET will work with the employer and candidate to develop a training & development plan to enable the

remaining requirements to be met. Candidates will be supported with mock EPAs, which will include practical observations, professional discussions and knowledge tests.

Gateway & EPA

Gateway

This is the preparation area for candidates' EPA, and can only be entered once we are in agreement with both the candidate and the employer that they are ready for EPA and the on-programme assessments have been met. This includes completion of the treatment log, Functional Skill requirements and a pre-Gateway mock assessment. Please be advised that there is also a minimum duration before candidates can enter Gateway. During this time, further mock assessments will be completed. There will also be a planning meeting to finalise the requirements for the EPA.

required documentation has been submitted. The EPA consists of 3 assessments. The knowledge test accurately demonstrates the candidate's underpinning knowledge and Health & Safety/Legal requirements. This will take place at one of our Academies within a controlled environment.

The second assessment is an observation and technology demonstration. The candidate will be required to complete a treatment log for submission based on treatments provided using all 15 technologies. For the observation, the candidate will need to complete services and treatments on at least two clients (one must be an existing client). The candidate will be expected to complete an advanced manual therapy consultation and an advanced manual therapy; two technical therapy consultations and one advanced facial

and advanced body technical treatment.

The technology demonstration allows the candidate to demonstrate the use of technical therapies which were not used during the observation.

The third assessment method will be a professional discussion structured to draw-out the best of the candidate's competence and excellence. Candidates will have submitted a portfolio to aid the EPA with this assessment. Total EPA time is 7½ hours.

The recommended EPA organisation for this Standard is **VTCT**.

End-point assessment

EPA is completed on the date we agree with the candidate and employer; this is usually within 8 weeks of entering Gateway and is finalised once all of the



INFORMATION



ADVICE & GUIDANCE



RECRUITMENT SUPPORT



INDUCTION



ON-PROGRAMME LEARNING



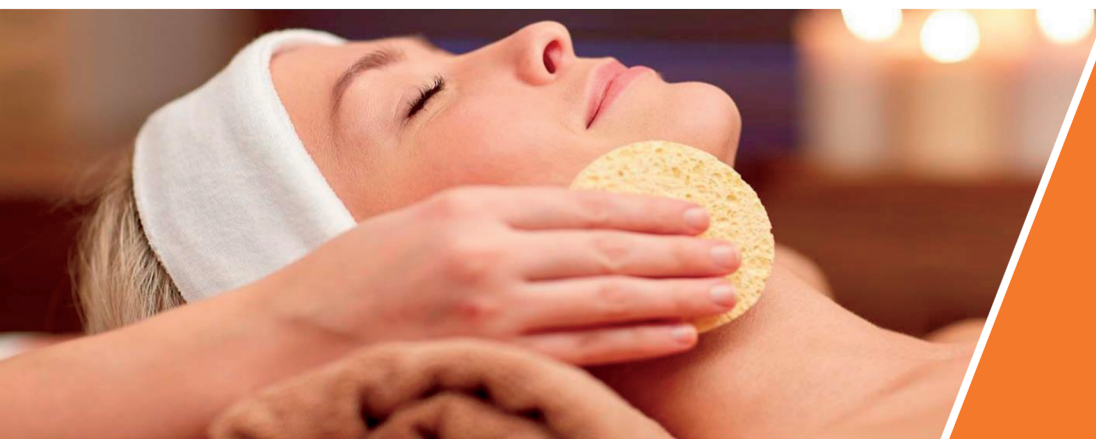
EPA PREPARATION



EPA



PROGRESSION ROUTES



Employer & learner satisfaction



of Employers would recommend us*



of Apprentices would recommend us*

* From our 2020-2021 Employer & Apprentice Survey