

3

Course Code
ST0214

Total Apprenticeship Duration

15 Months

- On-Programme
12 months
- Assessment Window
3 months

Recommended EPA Organisation
Training Qualifications UK



Apprenticeship Standard

Overview

ADVANCED & CREATIVE HAIR PROFESSIONAL LEVEL 3

An Advanced & Creative Hair Professional is a creative, passionate and driven individual who works independently without supervision. They can manage themselves and others as needed. They are committed to providing high-quality service, working according to the highest standards and continually

improving themselves. Hair Professionals assume responsibility for their work and client list, plan their work and time and strive for excellence in their work and industry. They are proactive, flexible, adaptable, diligent and responsible. Using their own creativity, individual flair, imagination and interpretation, these

high-skilled and experienced professionals deliver fashion-forward hair trends and innovative styles.

Typical job titles include Creative Stylist, Senior Stylist, Advanced Senior Stylist and Specialist Technician.

Course content

Knowledge & Skills

- Principles & stages of planning, researching & developing fashion-forward trends, different media types & platforms
- Promoting a fashion-forward collection of hairstyles to specific markets
- Creates a collection of hairstyle looks: in-depth consultation, maintains effective & safe materials of working, uses a range of technical skills.
- Presents a collection of hair looks: presents & promotes collection

internally using a visual medium,

- evaluation to improve further practice
- Smoothing & strengthening: in-depth complex analysis of clients' hair & scalp, use & apply products, resolve problems, evaluate the results of the service
- Advanced creative colour conversion & client consultation: carried-out tests & in-depth consultation, analyses factors influencing colour conversion technique
- Advanced creative colour correction: removal of artificial colour, removal of bands of colour, re-colouring hair

treated with lightener, correcting highlights & lowlights

- Sectioning & cutting guidelines: precision & personalised cutting techniques

Behaviours

- Facilitates safe working practices
- Solves problems
- Creativity & imagination
- Demonstrates individual flair
- Flexible & adaptable
- Professional development

Entry requirements

This Standard typically follows the completion of a Hair Professional Level 2 Standard or equivalent.

The apprentice must already be employed for over 16 hours per week. Candidates must have attained at least a Level 1 Functional Skill or equivalent in English & Maths prior to joining the course. Apprentices without Level 2 English & Maths (or GCSE equivalent) will need to achieve this prior to taking the End-Point Assessment. HOET will support with this.

Candidates must undergo a trade test.

Part 1: Creative Cut – this should showcase a range of technical skills to create a hairstyle demonstrating precision and personalised cutting techniques tailored to suit their model's characteristics. Part 2: Advanced Creative Colour – a colour conversion service which includes using creative sectioning techniques to personalise the colour result and enhance the finished look, as per their model's requirements. Both tests should meet required salon timings.

Salon requirements

Candidates will be required to complete smoothing and strengthening services on a range of clients, therefore salons will need to be able to support their apprentices by offering this service within salon to clients.

If not offered, HOET Colleges can support candidates with this service internally as day release learners.

On-programme development & training

During the programme, candidates will develop their occupation standard's knowledge, skills and behaviours. There is no mandatory qualification, but candidates will be trained and developed in exactly the same way to achieve their End-Point Assessment (EPA). Candidates will showcase a collection of looks within a portfolio which will inform the professional discussion within the EPA. This collection of looks must document the purpose and message of the collection, incorporating smoothing and

strengthening services, and showcasing passion, creativity and talent in their presentation and approach to advanced colour conversion. Candidates will also need to demonstrate how they have promoted their own professional development and embraced continual improvement. Candidates will be supported by day-release or salon-based one-to-one sessions. There will be regular theory sessions to ensure the knowledge required is delivered and understood. All of the above will help contribute to the

candidate's off-the-job training requirement. HOET will work with the employer and candidate to develop a training & development plan to enable the remaining requirements to be met. Candidates will be supported with mock EPAs, which will include practical observations, professional discussions and knowledge tests.

Gateway & EPA

Gateway

This is the preparation area for candidates' EPA, and can only be entered once we are in agreement with both the candidate and the employer that they are ready for EPA and the on-programme assessments have been met. This includes the completion of the collection of looks showcase, Functional Skill requirements and a pre-Gateway mock assessment. Please be advised that there is also a minimum duration before candidates can enter Gateway. During this time, further mock assessments will be completed. There will also be a planning meeting to finalise the requirements for the EPA.

with the candidate and the employer; the EPA is made-up of 3 assessments: a knowledge test, an observation and questioning, and a professional discussion. The knowledge test has to be sat first and the candidate cannot complete the observation, questioning or professional discussion until this has been achieved.

The knowledge test will assess the learner's underpinning knowledge via a multiple-choice test consisting of 40 questions. This will be taken in one of our Academies in a controlled environment. The observation and questioning will take 5 hours and may be split into discrete sections over the course of one day. The learner must complete a **precision cut and finish** from their personal collection of hairstyle looks, chosen by the client.

They must then complete an **advanced creative colour conversion on previously coloured hair**. Questioning will follow each of the services for a total of four questions. Finally, there will be a professional discussion for 45 minutes; the learner will use their collection of hairstyle looks to support this assessment. Total EPA time is 7 hours.

All elements of the EPA are combined to determine the EPA grade according to guidance in the assessment plan. This takes up to 3 weeks.

The recommended EPA organisation for this Standard is **Training Qualifications UK**.

End-point assessment

EPA is completed on the date we agree



INFORMATION



ADVICE & GUIDANCE



RECRUITMENT SUPPORT



INDUCTION



ON-PROGRAMME LEARNING



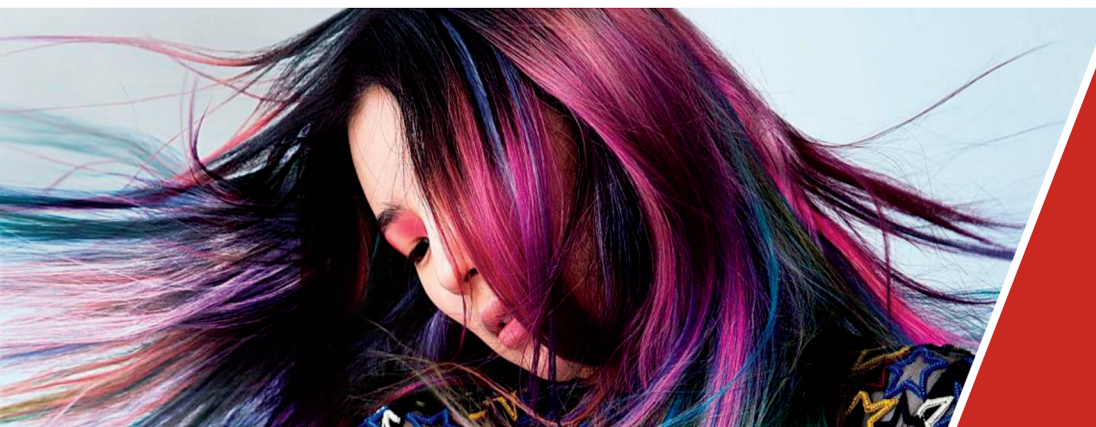
EPA PREPARATION



EPA



PROGRESSION ROUTES



Employer & learner satisfaction



of Employers would recommend us*



of Apprentices would recommend us*

* From our 2020-2021 Employer & Apprentice Survey