

2

Course code
ST1273

Total Apprenticeship Duration

18 Months

- On-Programme
15 months
- Assessment Window
3 months

HOET
HEART OF ENGLAND TRAINING



Apprenticeship Standard HAIR PROFESSIONAL LEVEL 2: BARBERING

Overview

From a small micro barbershop to large high street outlets or franchises, the barbershop work environment is always client-facing. This apprenticeship standard is designed to equip candidates with the knowledge and technical ability to become professional barbers. They should also be able to promote themselves, their organisation, products and services using a variety of channels.

A Barber's occupation involves providing an outstanding service whilst demonstrating a

variety of Barbering skills tailored to the client's requirements. Level 2 Barbers are capable of shampooing and conditioning, cutting hair using a range of barbering techniques, styling and finishing hair to create a variety of looks, cutting facial hair into shape, and shaving. All types of hair, characteristics and classifications must be catered to by barbers.

In addition, they should be capable of consulting with clients, demonstrating professionalism, value, behaviours,

communication skills, retail skills and safe work practices. Their level of precision and client service skills must be exceptional, and they must be able to work independently without supervision.

As an employee in this occupation, you will be expected to demonstrate industry standards of professionalism, values, behaviours, communication skills, teamwork, retail and selling skills. Additionally, they can create a variety of looks with barbering services.

Course content

Safe Working Practices

- Maintain safe, hygiene and effective methods of working and infection control.
- Adhere to instructions for the safe use of products, tools, equipment and materials.
- Flexible and professional approach to meet client demands.
- Working methods of which support environmental and sustainable working practices.

Behaviours & Communication

- Professional communication, appearance, time management and professional ethics.
- Respond promptly & establish expectations
- Respect of individual client characteristic.
- Maintain client privacy, modestly & comfort
- Examination and analysis of the hair, skins and scalp; recognition of contraindications and limiting factors.

- Function of front of house and wider barbershop duties.
- Awareness of complementary male grooming services, benefitted and drawbacks.
- Client and self, mental health and wellbeing support.

The Barbering Industry

- History and origins of barbering
- Barbering professionalism
- Continuous professional development
- Use of digital and social media for promotion

Technical - Cutting and finishing hair

- Preparation of hair following correct methodology.
- Creative approaches to haircuts by combining and adapting a range of technical skills and cutting techniques.

- Personalisation of haircuts, considering hair characteristics, weight distribution, balance and natural growth patterns.
- Correct use of cutting angles to achieve a desired look
- Restyle of the hair to achieve a significant/clear different style
- Precision and detailed shape, using correct techniques throughout the drying, styling and finishing.

Technical - Shaving

- Suitable methodologies and techniques to prepare the skin for shaving.
- Shaving and massage techniques
- Appropriate skin control and tension which takes account of the hair and skin characteristics to achieve the desired look.

Entry requirements

Individual employers may set their own entry requirements. The apprentice must already be employed for over 16 hours per week. If candidates have not attained at least a Level 1 Functional Skill or equivalent in English & Maths, HOET will support with achieving this.

Maths and English tests must be taken under exam conditions; this will take place in our Hair & Beauty Academies, in the workplace; subject to invigilation and room requirements or remotely as arranged in advance.

On-programme development & training

Learners will be supported by regular one to one visits, remotes sessions or day release academy days. HOET and the employer will ensure that the support chosen is right for the individual. There will be regular theory sessions to ensure that the required knowledge is gained.

Skills will be developed within the workplace or during academy day release. Learners will work towards meeting the required occupational duties for this apprenticeship.

Learners are also expected to achieve the Level 2 diploma in Barbering Professional as part of their on-going development; please note that achievement of the diploma does not mean learners have achieved their apprenticeship or are qualified to the occupational standard as detailed on the Institute of Apprenticeships & Technical Education.

Learners are required to undertake active off the job training. All of the above will contribute to this requirement.

HOET will work with employers and learners to develop a training and development plan to enable these requirements to be met.

Learners will be supported with mock End-Point Assessments (EPA) which will include practical observations, mock knowledge tests and mock professional discussions. Development feedback will be provided at the end of these mocks to ensure candidates are given the support required to achieve EPA.

Gateway & EPA

Gateway

This is the preparation area for learners' EPA, and can only be entered once we are in agreement with both the candidate and the employer that they are ready for EPA and the gateway requirements have been met. These include; off-the-job training, any Functional Skill requirements and the required on-programme qualification. Learners will also need to submit their portfolio of evidence to support the professional discussion assessment element. Once gateway has been approved learners' progress into their assessment window which for this apprenticeship is a 3-month period.

End-point assessment

EPA is completed on the date we agree with the candidate and employer.

The EPA consists of 3 assessment methods;

- A 20-question knowledge test (30 mins)
- Practical assessment (3.25 hours)
- Professional discussion underpinned by the portfolio of evidence (45 mins)

Total assessment time is 4 hours 40 minutes. Assessments can be taken in any order and over the course of different days to suit the employer and learner.

For the practical assessment learners will be **required to source their own models** and demonstrate a range of services against industry and occupational standards and timings. The learners' ways of working - legal and organisational, client care/customer service and technical skills - cutting and finishing hair and shaving.

Learners will be required to complete services on at least 2 clients and complete one restyle and one full face shave.

All elements of the EPA are combined to determine the EPA grade according to requirements detailed within the Assessment Plan on the Institute of Apprenticeships and Technical Education.

The recommended EPA organisation for this standard is **Training Qualifications UK**.



INFORMATION



ADVICE & GUIDANCE



RECRUITMENT SUPPORT



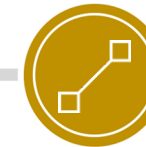
INDUCTION



ON-PROGRAMME LEARNING



EPA PREPARATION

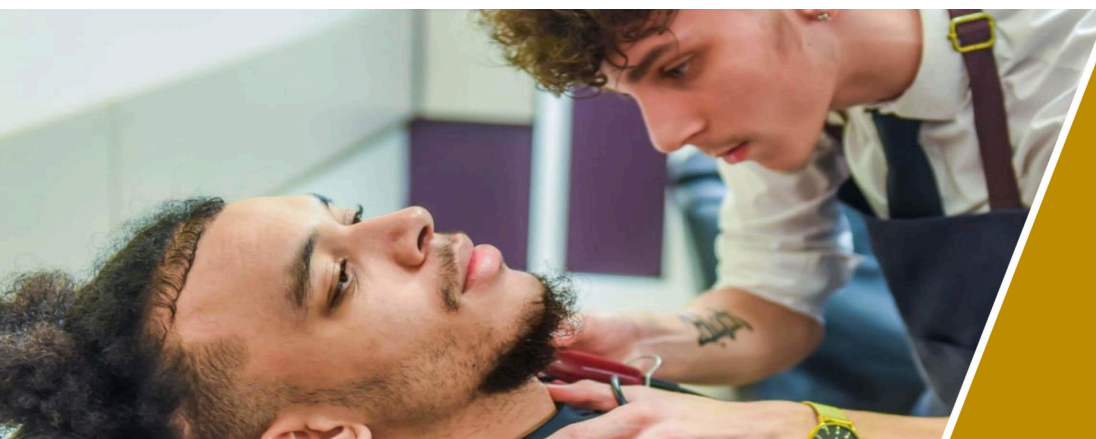


EPA



PROGRESSION ROUTES

“A very positive experience both for me as a salon owner and the apprentices.”



Employer & learner satisfaction



of Employers would recommend us*



of Apprentices would recommend us*

* From our 2020-2021 Employer & Apprentice Survey