



Course Code
ST0213

Total Apprenticeship Duration

21 Months

- On-Programme
18 months
- Assessment Window
3 months

Recommended EPA Organisation
Training Qualifications UK



Overview

As part of the occupation, a hairdresser must provide a variety of services tailored to meet the needs of the client, based on a comprehensive consultation and industry tests, while maintaining exceptional client care skills, safe working practices, adherence to legal, industry and organisational standards, procedures and protocols.

A hairdressing professional is creative, passionate and driven, who works independently. A quality service is provided while they work to the highest standards and

continue to develop their professional and personal skills.

It is a highly trusted, creative and stylish profession in which the hairdresser plays an integral part. Ownership of their work and client lists, acceptance of responsibility, proactiveness, flexibility, adaptability, planning of time and work and exceptional pride in their work are traits they possess.

As a member of this profession, you are likely to interact with many different type of clients, plus the team at the salon, as well

Apprenticeship Standard HAIR PROFESSIONAL LEVEL 2: HAIRDRESSING

as other hair and beauty professionals. In addition, you should be able to use a range of marketing channels to advertise yourself, the organisation, products and services.

As a member of this occupation, you will be expected to demonstrate industry standards in terms of professionalism, values, behaviours, communication skills, teamwork, retail and selling skills. Creating a variety of hairstyles through a range of hairdressing services.

Course content

Safe Working Practices

- Application of safe, hygienic & effective methods of working
- Flexible to changing demands
- Working methods which support and promote environmental and sustainable working practices
- Professionalism & passion for industry
- Commitment to quality and high standards working at a viable pace

Client Care/Customer Service

- Professional communication, appearance, time management and professional ethics
- Responsive to specific client needs when establishing expectations
- Respect of individual client characteristic
- Examination and analysis of the hair, skin and scalp; recognition of contraindications and limiting factors
- Client confidentiality, discretion and comfort

Technical - Shampoo and Condition Hair

- Correct use and application of product tools and equipment

- Application and following of correct methodologies and techniques whilst shampooing, conditioning and treating the hair scalp

Technical - Cut and Restyle Hair

- Correct use and application of methodologies with precision throughout haircuts
- Personalisation of haircuts, considering hair characteristics, weight, balance, distribution and natural growth patterns.
- Correct use of cutting angles to achieve desired look
- Creative approach to haircuts by combining and adapting a range of technical skills and cutting techniques
- Restyle of the hair to create a personalised short or medium length haircut; significantly changing the shape, length and style
- Creative approaches to restyling the hair which consider hair characteristics to enhance and personalise the look

Technical - Styling and Finishing Hair

- Correct use and application of methodologies with precision throughout haircuts
- Personalisation of haircuts, considering hair characteristics, weight, balance, distribution and natural growth patterns.
- Correct use of cutting angles to achieve desired look
- Creative approach to haircuts by combining and adapting a range of technical skills and cutting techniques
- Restyle of the hair to create a personalised short or medium length hair

Technical - Colouring and Lightening Hair

- Suitable methodologies, product tools and equipment and current colouring techniques to achieve the change of depth and tone
- Legal and organisational requirements for use and storage
- Creative approaches by combining and adapting a range of technical skills and methodologies, product tools and equipment

Entry requirements

Individual employers may set their own entry requirements. The apprentice must already be employed for over 16 hours per week. If candidates have not attained at least a Level 1 Functional Skill or equivalent in English & Maths, HOET will support with achieving this.

Maths and English tests must be taken under exam conditions; this will take place in our Hair & Beauty Academies, in the workplace; subject to invigilation and room requirements or remotely as arranged in advance.



On-programme development & training

Learners will be supported by regular one to one visits, remote sessions or day release academy days. HOET and the employer will ensure that the support chosen is right for the individual. There will be regular theory sessions to ensure the required knowledge is gained.

Skills will be developed either within the workplace or during academy day release. Learners will work towards meeting the required occupational duties for this apprenticeship.

Learners are also expected to achieve the Level 2 diploma Hairdressing Professional as part of their on-going development; **please note that achievement of the diploma does not mean learners have achieved their apprenticeship or are qualified to the occupational standard as detailed on the Institute of Apprenticeships.**

Learners are required to undertake active off the job training. All of the above will contribute to this requirement.

HOET will work with employers and learners to develop a training and development plan to enable these requirements to be met.

Learners will be supported with mock End-Point Assessments (EPA) which will include practical observations, mock knowledge tests and mock professional discussions. Development feedback will be provided at the end of these mocks to ensure candidates are given the support required to achieve EPA.

Gateway & EPA

Gateway

Once the employer, learner and HOET staff member agree that the learner is working at or above the occupational standard the learner will enter gateway. The learner must have met the gateway requirements relating to Off the Job Training, Maths and English and the required on-programme qualification. Learners will also need to submit their portfolio of evidence to support the professional discussion assessment element. Once gateway has been approved, learners' progress into their assessment window which for this apprenticeship is 3 months. This means the learner must take all assessments within a 3-month period.

End-point assessment

EPA will be arranged for dates which are suitable to the learner and employer. The EPA consists of 3 assessment methods.

- A 40-question knowledge test (60 minutes)
- Practical Assessment (5.5 hours)

- Professional discussion underpinned by the portfolio of evidence (35mins)
- Total assessment time is 7 hours. The assessment can be taken in any order and over the course of different days to suit the learner and employer.

For the practical assessment learners will be **required to source their own models** and demonstrate a range of services against industry and occupational standards and timings. The learners' ways of working - legal and organisational, client care/customer service, shampoo and condition, styling and finishing cutting and restyle hair will be assessed. Learners will be required to complete services on at least **2 clients** and complete one **above the shoulder restyle**.

All elements of the EPA are combined to determine the EPA grade according to the requirements detailed within the Assessment Plan on the Institute of Apprenticeships and Technical Education.

The recommended EPA organisation for this standard is **Training Qualifications UK**.

Model Requirements

Learners will need at least 2 models to demonstrate:

- Restyle to create a personalised short or medium (above the shoulder) length hair cut, changing the shape, length and style of the hair.
- Haircut
- Demonstration of 6 different cutting techniques when completing the above hair services
- Completion of a colouring and lightening service
- Use of woven highlights using either foils or wraps to the root
- Application of another colouring product (quasi-permanent, semi-permanent or permanent colour)
- Styling and finishing of the hair



INFORMATION



ADVICE & GUIDANCE



RECRUITMENT SUPPORT



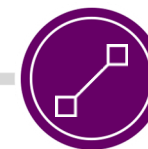
INDUCTION



ON-PROGRAMME LEARNING



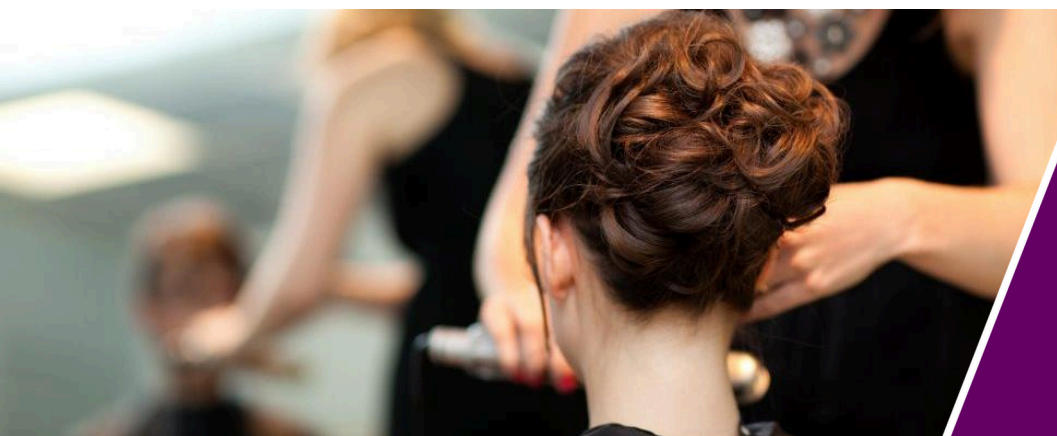
EPA PREPARATION



EPA



PROGRESSION ROUTES



Employer & learner satisfaction



of Employers would recommend us*



of Apprentices would recommend us*

* From our 2020-2021 Employer & Apprentice Survey